

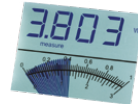
# TUNER

Single Channel, Power Monitor with Tuning Needle



## DISPLAY MODE

- > **TAIL:**  
Follows the speed of the power change. The comet tail is longer for faster reading changes and shorter for slower reading changes.
- > **BAR GRAPH:**  
Fills the needle display up to the real-time value (best mode when viewing from a distance).
- > **HIGH/LOW:**  
When activated, indicates the highest and lowest powers since activation. The high and low needles blink to help distinguish them from the real-time value.



## KEY FEATURES

- > **ULTRA-FAST NEEDLE**  
Less than 1 second response time
- > **READS ALL POWER DETECTORS**  
Thermopiles and photodetectors of the PH100 and PH20 Series
- > **LARGE LCD DISPLAY**
  - 77 x 58 mm
  - 17.5 mm digits
  - Backlight (with AC adaptor)
- > **3 DISPLAY FUNCTIONS FOR THE NEEDLE**
  - Normal
  - Tail Mode (indicates speed)
  - Bar graph

Also HIGH and LOW values hold
- > **SINGLE-BUTTON NAVIGATION**  
Direct access and long press access to the main functions
- > **LOW CONSUMPTION**  
Lasts 500 hours with 4 AA alkaline batteries

## ACCESSORIES



Additional 9V power supply



Wall support



Pelican carrying case

# TUNER

## Specifications

CE NIST\*  
Traceable   
\*Also traceable to NRC-CNRC



### TUNER

<b>DETECTOR TYPES</b>	Thermopiles, photodetectors (PH series)
<b>DISPLAY</b>	LCD with tuning needle and backlight

#### POWER METER SPECIFICATIONS

<b>Power range</b>	10 pW to 10 kW
<b>Digital resolution</b>	
PH series	10 pW
XLP series	1 µW
UP series	1 mW
HP series	100 mW (HP60A), 1 W (HP100A)
<b>Monitor accuracy</b>	±1%, full scale
<b>Statistics</b>	Min, max
<b>Response time</b>	<1 s


#### DETECTOR COMPATIBILITY

<b>Thermopiles</b>	Average power (W, dBm)
<b>Photodetectors (PH series)</b>	Average power (W, dBm)

#### GENERAL SPECIFICATIONS

<b>Digital display size</b>	77 x 58 mm LCD
<b>Needle display</b>	Ultrafast tuning needle
<b>Needle accuracy</b>	0.9%
<b>Refresh rate</b>	4 Hz
<b>Analog output</b>	0-1 Volt, full scale, ±1%
<b>Dimensions (without stand)</b>	210W x 122H x 44D mm
<b>Weight (with batteries)</b>	0.47 kg
<b>Battery type</b>	4 x AA alkaline
<b>Battery life (estimated)</b>	500 hours with detector
<b>External power supply</b>	100/240 VAC 50 - 60 Hz to 9 VDC 1.66 A

#### ORDERING INFORMATION

<b>Product page</b>	
---------------------	---

Specifications are subject to change without notice